

AMF COMMEMORATED WORLD MENSTRUAL HYGIENE DAY ACROSS THE SIX AREA COUNCILS OF THE FCT FROM MONDAY 26TH TO SATURDAY 31ST MAY, 2025

INTRODUCTION

Al Masaareef Foundation (AMF) in collaboration other partners commemorated World Menstrual Hygiene Day 2025 by conducting a week-long outreach across the six Area Councils of the Federal Capital Territory (FCT). The outreach was designed to raise awareness on menstrual hygiene and promote inclusive support for adolescent girls both in and out of school. Women, educators, women-led group leaders, and also boys and men were included to foster community-wide understanding and acceptance.

With the support of Sanitary Pads from Mr. Seyi Tinubu and Office of the Senior Special Assistant to the President on Citizenship and Leadership, the intervention commenced from Monday, 26th May to Saturday, 31st May 2025, and was marked by education, dialogue, and distribution of sanitary pads. The outreach was inclusive and reached girls in school through their respective schools and out-of-school girls in their various communities, particularly within the palaces of traditional rulers, ensuring cultural sensitivity and community engagement.



supported by



SEYI
TINUBU



OFFICE OF THE
SENIOR SPECIAL ASSISTANT
TO THE PRESIDENT ON
CITIZENSHIP AND LEADERSHIP

In commemoration of World Menstrual Hygiene Day 2025
AL MASAAREEF FOUNDATION (AMF)

welcomes you to



**SENSITIZATION AND SUPPORT
OUTREACH FOR IN AND OUT-OF-
SCHOOL ADOLESCENT GIRLS IN
THE FCT ON MENSTRUAL HYGIENE
MANAGEMENT**



INSTITUTE OF HUMAN
VIROLOGY, NIGERIA



project
NigWED
Nigeria Women Economic Development



LOLA CATER
FOR THE AGILITY FOUNDATION



PATHFINDER



**Women
Friendly
Initiative**



**Nigeria Women's
Empowerment Fund**



**FCTA Women Affairs
Secretariat**



FCTA

DAILY ACTIVITIES AND AREA COUNCIL REPORTS

DAY 1: Monday, 26th May – Abaji and Kwali Area Councils

Abaji Area Council

AMF commenced its outreach in Abaji, visiting two major Junior Secondary Schools and engaging with adolescent girls in the community through the Ona of Abaji's Palace. The team reached out to **Junior Secondary School, Naharati, Abaji, Junior Secondary School, Sabon Gari, Abaji**. The Principal of both schools appreciated the kind gesture of the organization and recognized the donors for such a timely response to end period poverty.

The team proceeded to reach out to out-of-school adolescent girls. The approach used was to get the buy-in of all women and youth-led groups and religious heads in the community. The outreach took place at the **Ona of Abaji's Palace** where 250 out-of-school adolescent girls, women leaders, youth representatives, and market heads, religious leaders were represented.

Distribution: Each girl received two sanitary pads, and each school received two emergency packs of sanitary pads to be kept with the school counsellor when any girl needs a sanitary pad during school hours. The boys were also given to give their sisters or mother at home.

The Wife of the Ona of Abaji expressed deep appreciation to AMF, donors and partners, emphasizing how timely and impactful the intervention was for adolescent girls, particularly those out of school. She noted, *“This outreach has not only provided sanitary pads but restored dignity and hope to our young girls. Please, do not forget Abaji in future interventions.”*

Team Members

- AMF Team
- Office of the Senior Special Adviser to the President on Citizenship and Leadership
- NigWed
- FCT Universal Basic Education Board (FCT UBEB)
- Volunteers

Junior Secondary School Naharati, Abaji



Junior Secondary School Sabon Gari, Abaji



Ona of Abaji Palace, Abaji Area Council



Kwali Area Council

AMF continued its outreach on Monday in Kwali Area Council, visiting two Junior Secondary Schools and engaging with adolescent girls in the community through the Etsu of Kwali Palace. The schools were:

- **Junior Secondary School, Kwali Central**
- **Junior Day Secondary School, Kwali**

The Principal of both schools appreciated the kind gesture of AMF and appreciated the donors, Mr. Seyi Tinubu and the Office of the Senior Special Assistant to the President on Citizenship and Leadership for such a timely response to end period poverty and the inclusion of boys in the outreach.

The team proceeded to reach out to out-of-school adolescent girls. The approach used was to get the buy-in of all women and youth-led groups and religious heads in the community. The outreach took place at the **Etsu of Kwali Palace**, where 200 out-of-school adolescent girls, women leaders, youth representatives, market heads, and religious leaders were represented.

Distribution: Each girl received two sanitary pads, and each school received two emergency packs of sanitary pads to be kept with the school counsellor when any girl needs a sanitary pad during school hours. The boys were also given to give to their sisters or mother at home.

The wife of the Etsu of Kwali praised the inclusive approach of AMF, especially the consideration given to reaching girls in royal communities. She said, *“Our girls now know how to take care of themselves. Thank you for not overlooking the palace and for giving voice to out-of-school girls who are often forgotten. we would love subsequent programmes to reach the remote areas inside Kwali Area Council, so that the girl there can also be privileged to information and support from the organization, donors and partners.”*

Junior Day Secondary School, Kwali



Junior Day Secondary School Kwali Central



Etsu of Kwali Palace



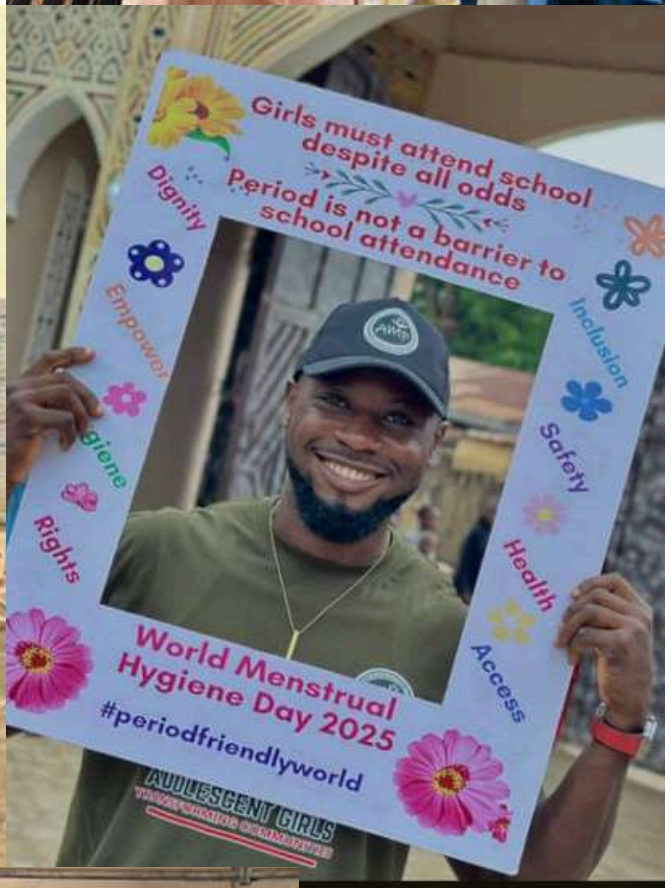
DAY 2: Tuesday, 27th May – Gwagwalada Area Council

Despite schools being closed for Children's Day, AMF ensured continued engagement. The team visited Aguma of Gwagwalada Palace where 250 Adolescent Girls were sensitized on menstrual hygiene management in English, Hausa and Bassa language. The Queen expressed joy over the support and noted, "This outreach will help demystify menstruation. Our out-of-school girls feel seen and supported, thank you for bringing this hope to our palace, and we hope to get more support for the girls."

The team proceeded to hand over the sanitary pads for Junior Secondary School, Sabon Gari, Gwagwalada and Junior Secondary School, Abattoir to the principal of the school. The pads were distributed to the students the following day during their assembly. The principal the team met in the school expressed deep appreciation to AMF and the donors for such kind gesture and for reaching out to their school. The office of the Senior Special Assistant to the President on Citizenship and Leadership was fully represented with AMF Team and Volunteers.

Aguma of Gwagwalada Palace





Donation to Junior Secondary School Sabon Gari



Distribution at Junior Secondary Abattoir



Distribution at Junior Secondary Sabon Gari



DAY 3: Wednesday, 28th May – Kuje Area Council

28th May marked World Menstrual Hygiene Day which was commemorated with multiple impactful visits to:

- Junior Secondary School, Kayarda, Kuje
- Junior Secondary School, Kuje Central
- Gomo of Kuje's Palace
- Model Girls Junior Secondary School, Aco, AMAC
- Disability Community, Karon-Majiji
- IDP Camp, Karon-Majiji

The principals of the schools appreciated the efforts and thoughtfulness of the donors and AMF.

The Wife of the Gomo of Kuje commended the focus on out-of-school and displaced girls. She noted, "For many of these girls, this is the first time anyone has spoken to them openly about their bodies with dignity. Please continue this mission and we hope that communities in the rural areas of Kuje."

The Heads of disability community and IDP camp also appreciated efforts put in place to sensitize and support the women and girls within the camp with sanitary, which to them goes a long way in addressing period poverty among the girls and women.

Team Members

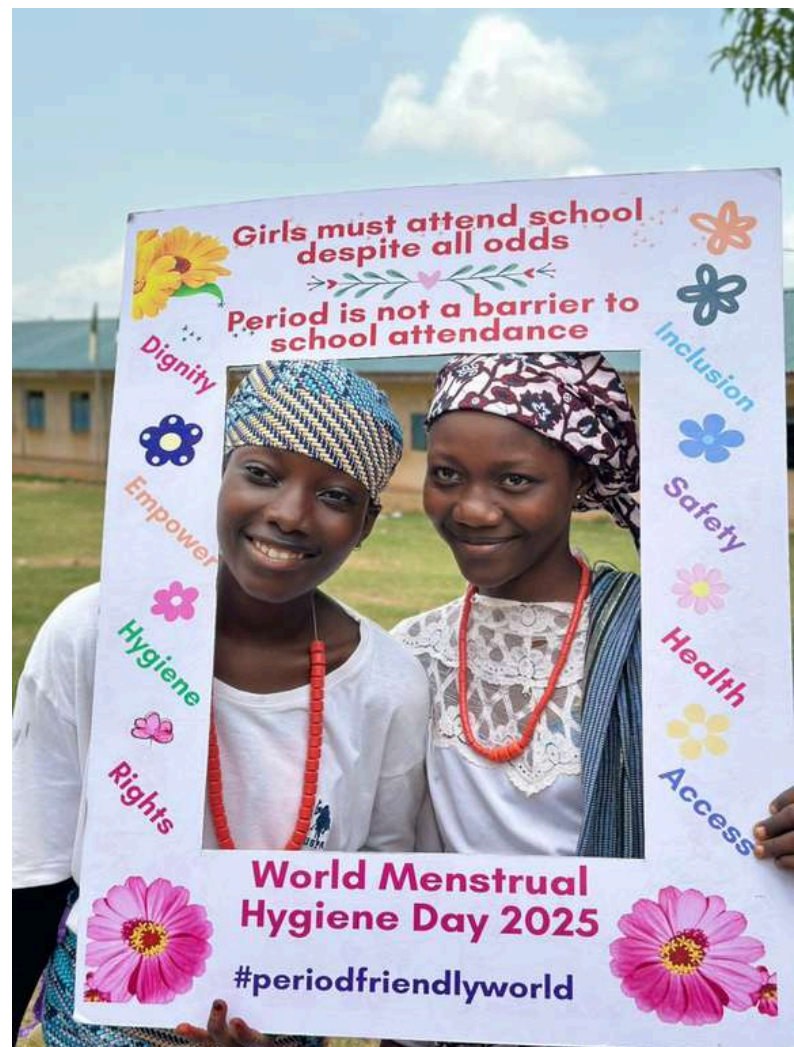
- AMF Team
- Office of the Senior Special Assistant to the President on Citizenship and Leadership
- Pathfinder International
- NigWed Project
- Lola Cater Foundation
- FCT Universal Basic Education Board (UBEB)
- Volunteers

Junior Secondary School, Kayarda, Kuje



Junior Secondary School Kuje Central





Gomo of Kuje Palace



Gomo of Kuje Palace



Model Girls Junior Secondary School, Aco, AMAC



Model Girls Junior Secondary School, Aco, AMAC



Disability Community, Karon-Majiji



IDP Camp, Karon-Majiji



DAY 4: Thursday, 29th May – Bwari and Dutse

On the 29th May, the team visited:

- Junior Secondary School, Bwari Central
- Junior Secondary School, Bwari 1
- Out of school girls from Etsu of Bwari and Sarki of Bwari
- Government Girls Secondary School, Dutse
- Hakimi of Dutse Palace

The Principals of the school appreciated the efforts of the donors, partners and AMF for reaching out to their school and also introducing emergency kits for the girls to access sanitary pad while in school.

The Wife of the Etsu of Bwari and Sarkin Wife sent their representatives who emphasized the importance of reaching young girls and remarked, “I am touched that this initiative did not stop at the schools but came to the community where our most vulnerable girls live”.

The Hakimi of Dutse accepted the team and was with us during the outreach at the palace. He was grateful for reaching out to the girls in the community and for also educating them as he noted that education on their body especially menstrual hygiene is rarely a matter for discussion.

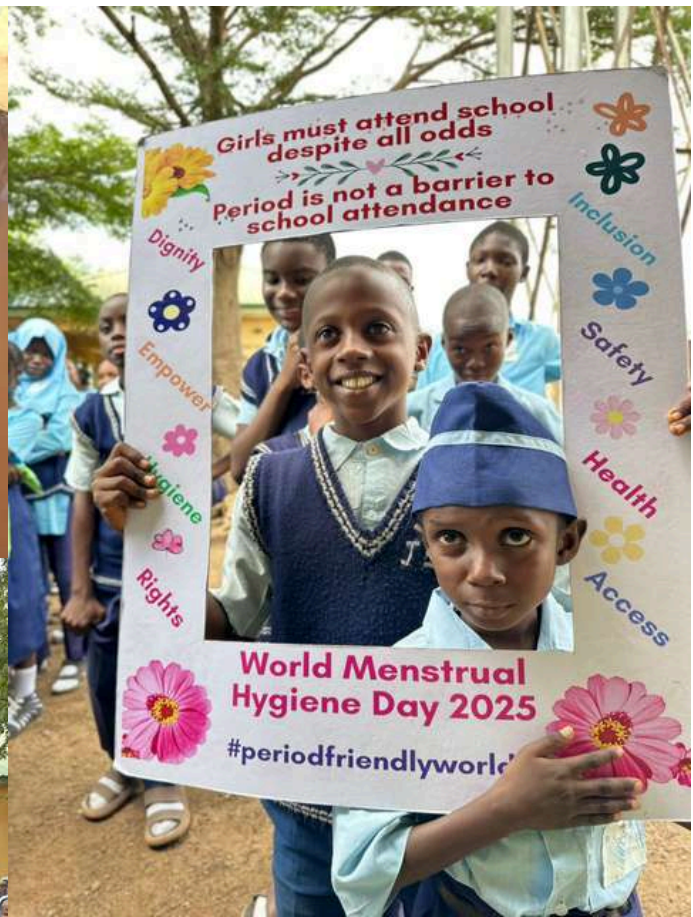
The Team went ahead to donate emergency kits to the Principal of Government Girls Secondary School, Dutse.

Team Members

- AMF Team
- Prime Diamond Initiative for Community Health (PDICH)
- FCT Universal Basic Education Board (FCT UBEB)
- Volunteers



Junior Secondary School, Bwari 1



Out of School Girls from Etsu of Bwari and Sarki of Bwari



Government Girls Secondary School, Dutse



Hakimi of Dutse Palace



DAY 5: Friday, 30th May – Abuja Municipal Area Council (AMAC)

The Team visited two schools and Sapeyi of Garki Palace to reach out to girls in the community.

- **Junior Secondary School, Waru**
- **Junior Secondary School, Takushara/ Community Girls**
- **Sapeyi of Garki Palace**

The Office of the Senior Special Assistant to the President on Citizenship and Leadership was fully represented.

The Principal of both schools appreciated AMF, Partners and Donors for reaching out to girls in the school and so much effort to sensitize and also support the school girls. Due to the low population of the girls in JSS Takushara, adolescent girls from the community joined in the school for sensitization and support.

The secretary to the palace appreciated AMF and the Office of the Senior Special Assistant to the President on Citizenship and Leadership. He said that this initiative have brought light into the lives of girls in Garki community. For the out-of-school girls, this means so much.”

Team Members

- AMF Team
- Office of the Senior Special Assistant to the President on Citizenship and Leadership
- NigWed Project
- Prime Diamond Initiative for Community Health (PDICH)
- FCT Primary Health Care Board
- Volunteers

Junior Secondary School, Waru



Junior Secondary School, Takushara/ Community Girls



Sapeyi of Garki Palace



DAY 6: Saturday, 31st May – Mararaba Yarkasuwa and Abuja Children's Home

On Saturday, the team visited Mararaba Yarkasuwa community, reaching 350 adolescent girls and 50 boys in the community to sensitize and support them with menstrual pads.

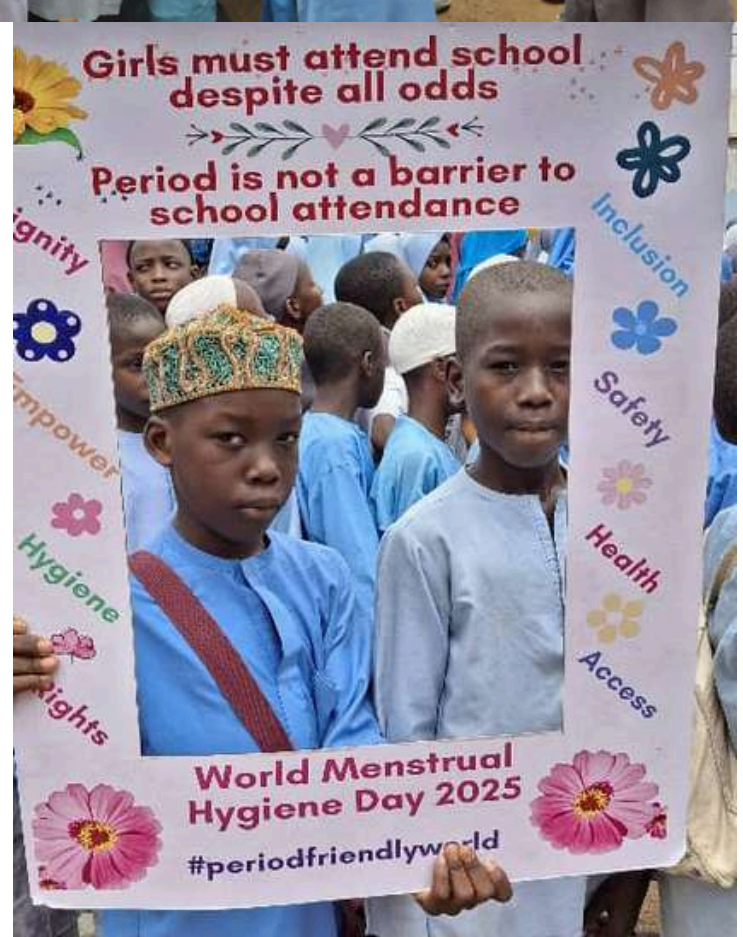
The team proceeded to Abuja Children's Home at Karu, where 30 adolescent girls were each given a yearly supply of pads. This means that they do not have to worry about access to menstrual products for a year, a huge relief and a major step towards ending period poverty.

Team Members

- AMF Team
- Prime Diamond Initiative for Community Health (PDICH)
- Volunteers

Mararaba Yarkasuwa Community





Abuja Children's Home



Organizers, Donors and Partners

- Mr Seyi Tinubu
- Office of the Senior Special Adviser to the President on Citizenship and Leadership
- Beyond Boundaries
- Institute of Human Virology
- NigWed
- Pathfinder International
- Prime Diamond Initiative for Community Health (PDICH)
- Women Friendly Initiative
- Osita Merchantile
- Sana Pads
- Lola Cater Foundation
- FCT Universal Basic Education Board (FCT UBEB)
- FCT Primary Health Care Board
- AMF Team
- Volunteers

Distribution of Pads to Schools Per Area Council

S/N	LOCATION	DATE	NO OF GIRLS/BOYS	EMERGENCY KIT
1.	JSS NAHARATI ABAJI	26 TH MAY	400	3 PACKS
2.	JSS SABON GARI, ABAJI	26 TH MAY	400	3 PACKS
3.	JSS KWALI CENTRAL	26 TH MAY	400	3 PACKS
4.	JDSS KWALI	26 TH MAY	400	3 PACKS
5.	JSS SABON GARI GWAGWALADA	27 TH MAY	400	3 PACKS
6.	JSS ABATTOIR GWAGWALADA	27 TH MAY	400	3 PACKS
7.	JSS KAYARDA KUJE	28 TH MAY	400	3 PACKS
8.	JSS KUJE CENTRAL	28 TH MAY	400	3 PACKS
9.	MODEL GIRLS SECONDARY SCHOOL, ACO, AMAC	28 TH MAY	600	3 PACKS
10.	JSS BWARI CENTRAL	29 TH MAY	400	3 PACKS
11.	JSS BWARI 1	29 TH MAY	400	3 PACKS
12.	GGSS DUTSE	29 TH MAY	-	2 PACKS
13.	JSS WARU	30 TH MAY	500	3 PACKS
14.	JSS TAKUSHARA	30 TH MAY	400	3 PACKS

Distribution of Pads Per Area Council

S/N	LOCATION	DATE	NO OF OUT OF SCHOOL GIRLS	SUPPORT
1.	ONA OF ABAJI PALACE	26 TH MAY	250	2 PACKS
2.	ETSU OF KWALI	26 TH MAY	250	2 PACKS
3.	AGUMA OF GWAGWALADA PALACE	27 TH MAY	250	2 PACKS
4.	GOMO OF KUJE	28 TH MAY	250	2 PACKS
5.	DISABILITY COMMUNITY KARON MAJIJI	28 TH MAY	300	3 PACKS
6.	IDP CAMP KARON MAJIJI	28 TH MAY	350	3 PACKS
7.	ETSU AND SARKI BWARI	29 TH MAY	200	4 PACKS
8.	HAKIMI O DUTSE	29 TH MAY	300	2 PACKS
9.	SAPEYI OF GARKI	30 TH MAY	250	2 PACKS
10.	ABUJA CHILDREN'S HOME	31 ST MAY	30	30 PACKS
11.	MARARABA YARKASUWA COMMUNITY	31 ST MAY	400	2 PACKS